

Hello,

Hybrid World Workshop:

Mashing/Mapping

Service
(e.g. Google, Flickr)

+

API

(Application
Programming
Interface)

+

?

Introduction

Google Maps
Google Earth

Introduction

939 Projects

[http://www.programmableweb.com/api/
GoogleMaps/mashups](http://www.programmableweb.com/api/GoogleMaps/mashups)

Introduction



Introduction

5 Possibilities

Introduction

Explore:

‘Travel in or through (an unfamiliar country or area) in order to learn about or familiarize oneself with it.’



Powers of Ten (1977)

(Charles & Ray Eames)

[http://maps.google.com/maps?
ll=41.864551,-87.613606&spn=0.0061
69,0.007392&t=k&hl=en](http://maps.google.com/maps?ll=41.864551,-87.613606&spn=0.006169,0.007392&t=k&hl=en)

Powers of Ten (2007)



Registry Cleaner Download

Free Scan, Increase PC performance & fix Registry Errors, 5 Star Rated

Boost Your Internet Speed

Speed Up your Internet up to 375% Check It Out Now, We'll Prove It!

Ads by Google

Map

Satellite

Hybrid

SHOW LINK

SUGGEST THIS SIGHT

Truck Crash

Oh dear, it looks like an articulated lorry has rolled over near Bismark. I hope no-one was hurt. The lorry in question is owned by Jim Palmer Trucking, and was blown over by winds in excess of 180kph. If, for some weird reason, you enjoy seeing traffic accidents from above, you'll love our previous post [9 \(Possible\) Traffic Accidents](#). Thanks: a67 Updated: With thanks to Gary Powell and others in comments.

[Read the Full Post](#)

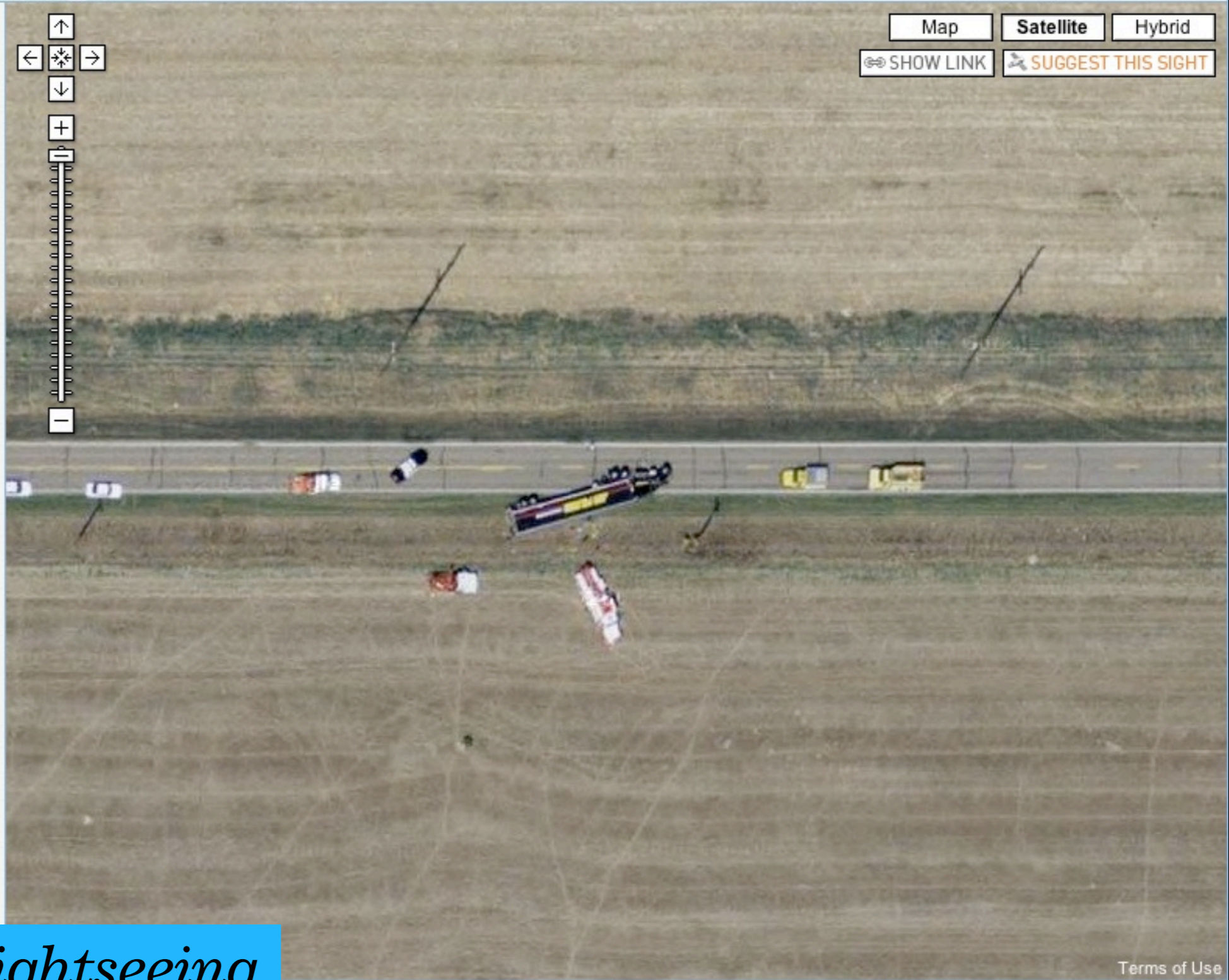
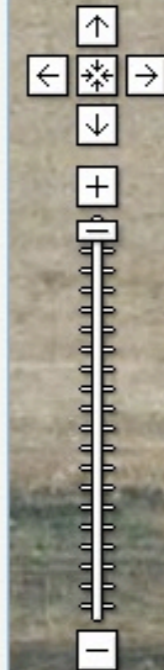
[View in Google Earth](#)

[roadside assistance](#)

Log on now and find a list of the leader assistance providers.

www.insurance-618.co.uk

Ads by Google



Google Sightseeing

Terms of Use

(<http://googlesightseeing.com/>)



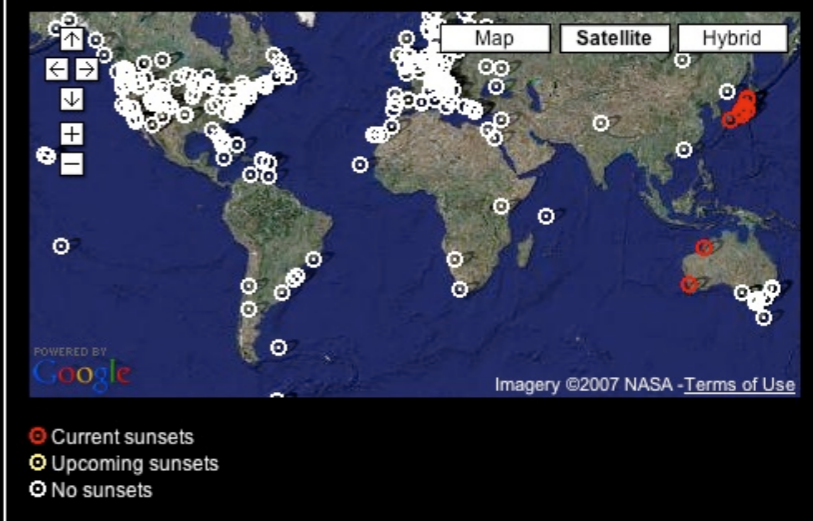
more →

Fuji-Yoshida (Mount Fuji), Japan



- other sunsets
- Kochi, Japan
 - Kochi, Japan
 - Broome, Western Australia, Australia
 - Shinsu, Japan
 - Hirosaki, Japan
 - Aomori, Japan
 - Yabuki Town, Japan
 - Perth, Western Australia, Australia
 - Sanpoku Town, Niigata, Japan
 - Hillarys, Western Australia, Australia
 - Perth (Trigg Beach), Western Australia, Australia
 - Perth (Trigg Point), Western Australia, Australia

interactive global map



Eternal Sunset

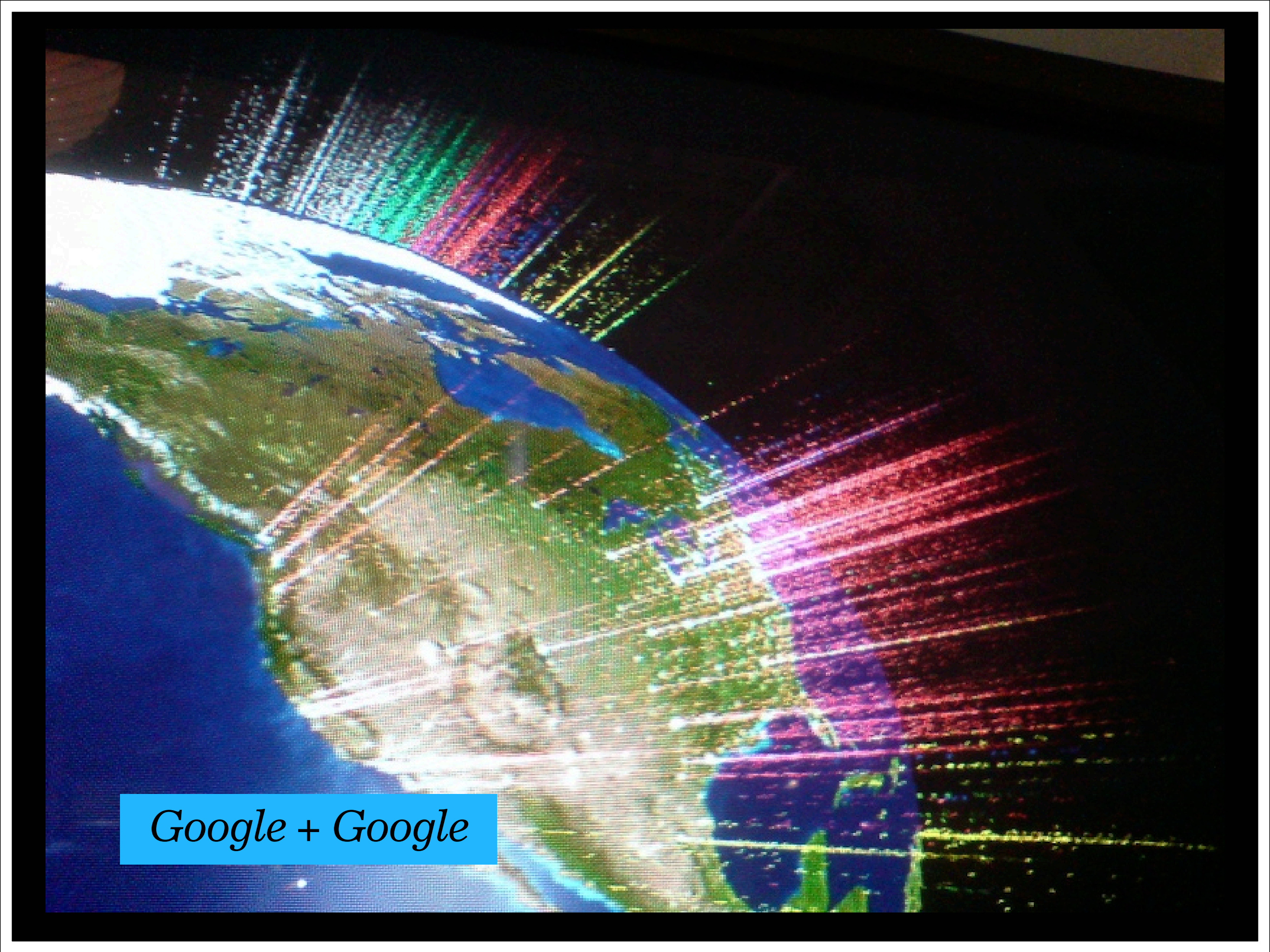
(Adriaan Stellingwerff & Biep en Lu – <http://www.eternalsunset.net>)

Raise awareness:

‘Having knowledge or perception of a situation or fact.’



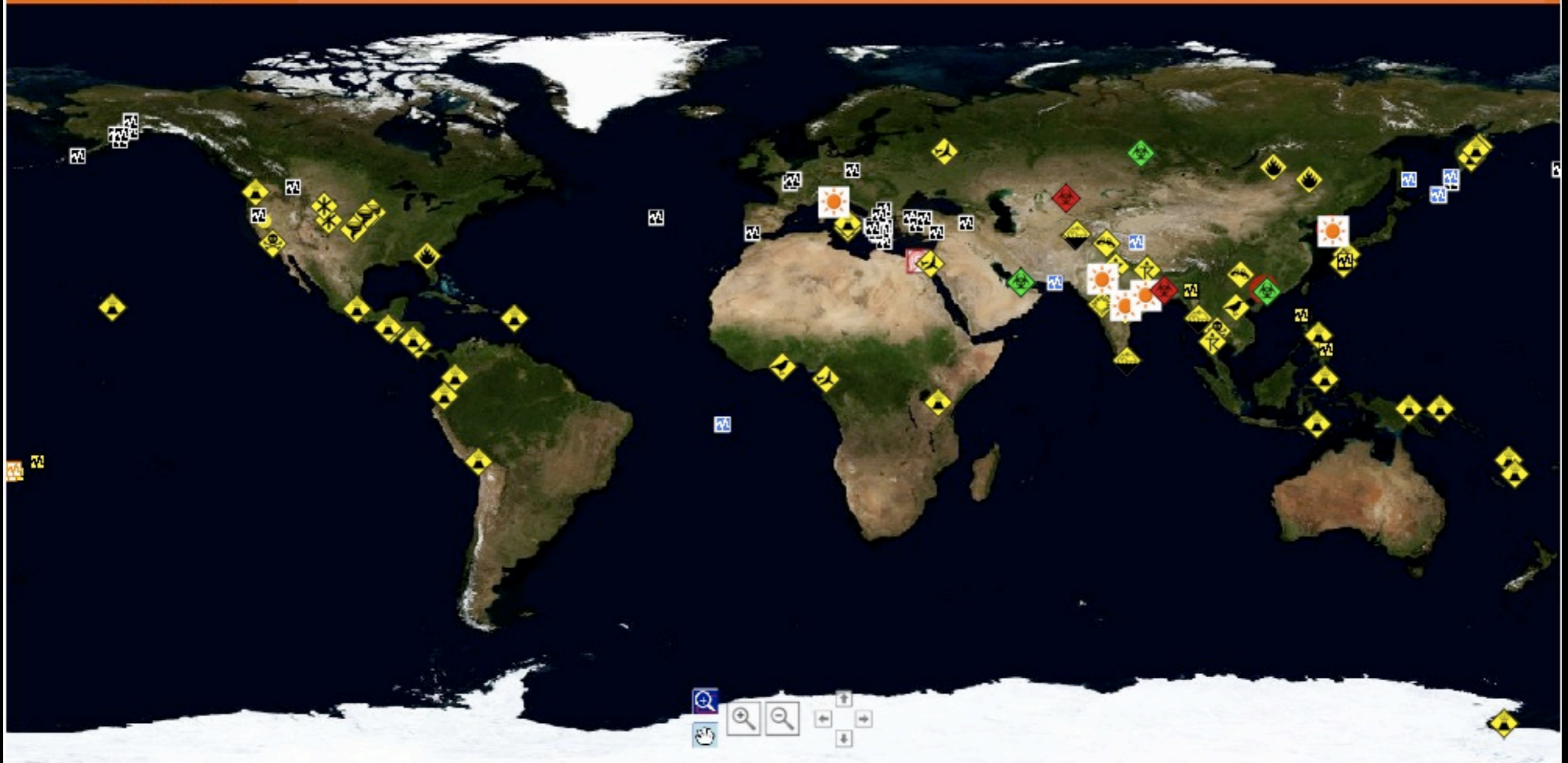
Aviation Awareness

An aerial photograph of a forest with a grid overlay. The grid lines are colored in a rainbow spectrum (red, orange, yellow, green, blue, purple). A blue rectangular box is positioned in the lower-left corner of the image, containing the text "Google + Google" in a white, serif font.

Google + Google



Actual events:



Other AlertMaps v Disaster Scale v Personal Data v

Budapest, Hungary

Alertmap

Newest activity

Icon description

Order free AlertMail

Event report

Search

Donate

(Havaria Information Service – <http://hisz.rsoe.hu/alertmap/index.php?smp=&lang=eng>)

Sea level rise:

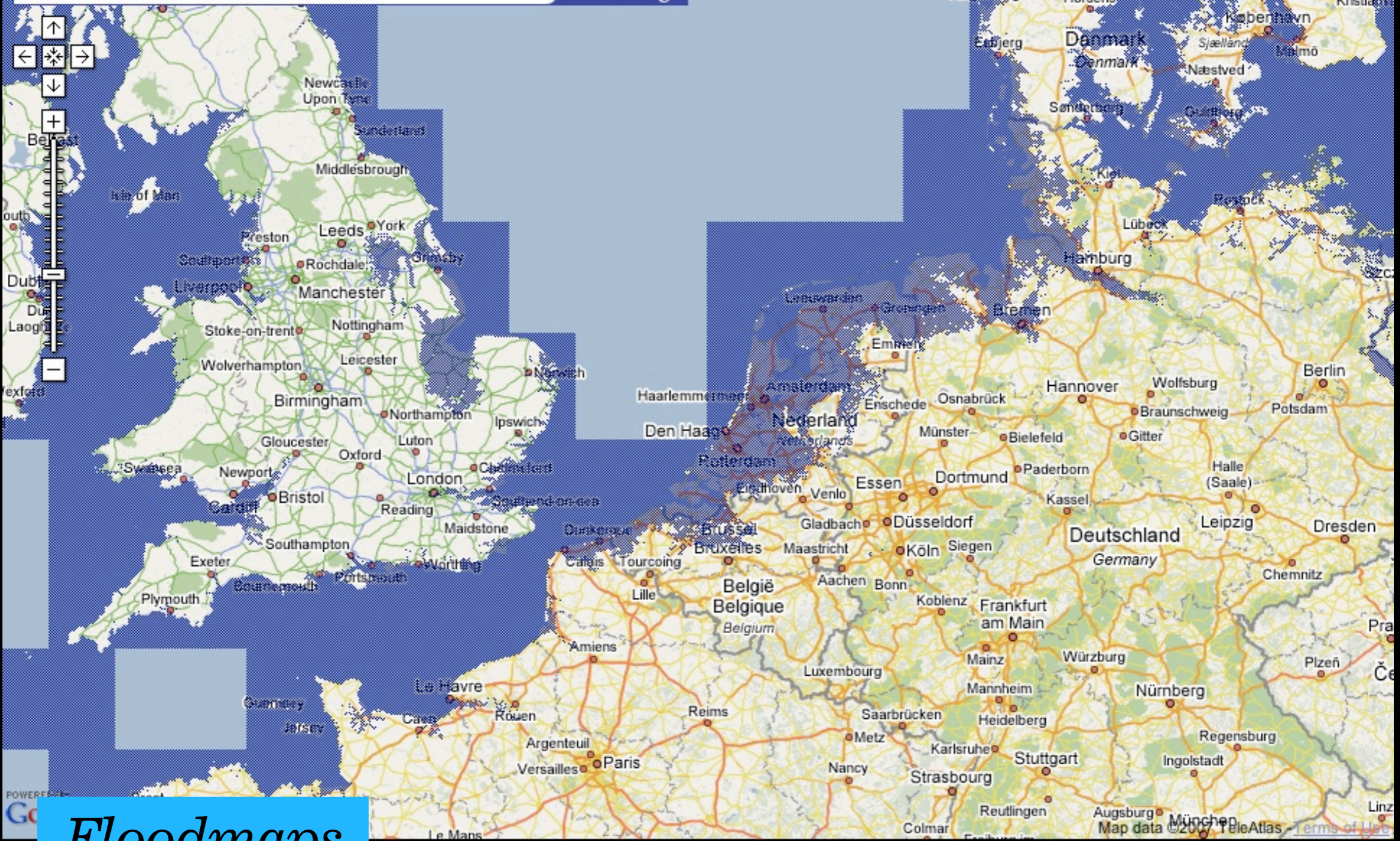
[Europe](#) [N. America](#) [S. America](#) [Africa](#) [SE. Asia](#) [China & Japan](#) [Australia](#)

Floodplain Mapping
1D and 2D hydraulic modelling & GIS used for floodplain mapping

Flood Control Solutions
CMI Sheet Piling Solutions Synthetic and Aluminum Sheet Piling

Ads by Google

Map Satellite Hybrid



Floodmaps

(Firetree.net – <http://flood.firetree.net/>)

Individualize:

‘Tailor (something) to suit the individual.’



Garbagescout; Bluepuddle

(<http://garbagescout.com/>, <http://www.bluepuddle.org/users/zack/energy>)



Maps

Search Results My Maps **New!**

My Maps - Create new map

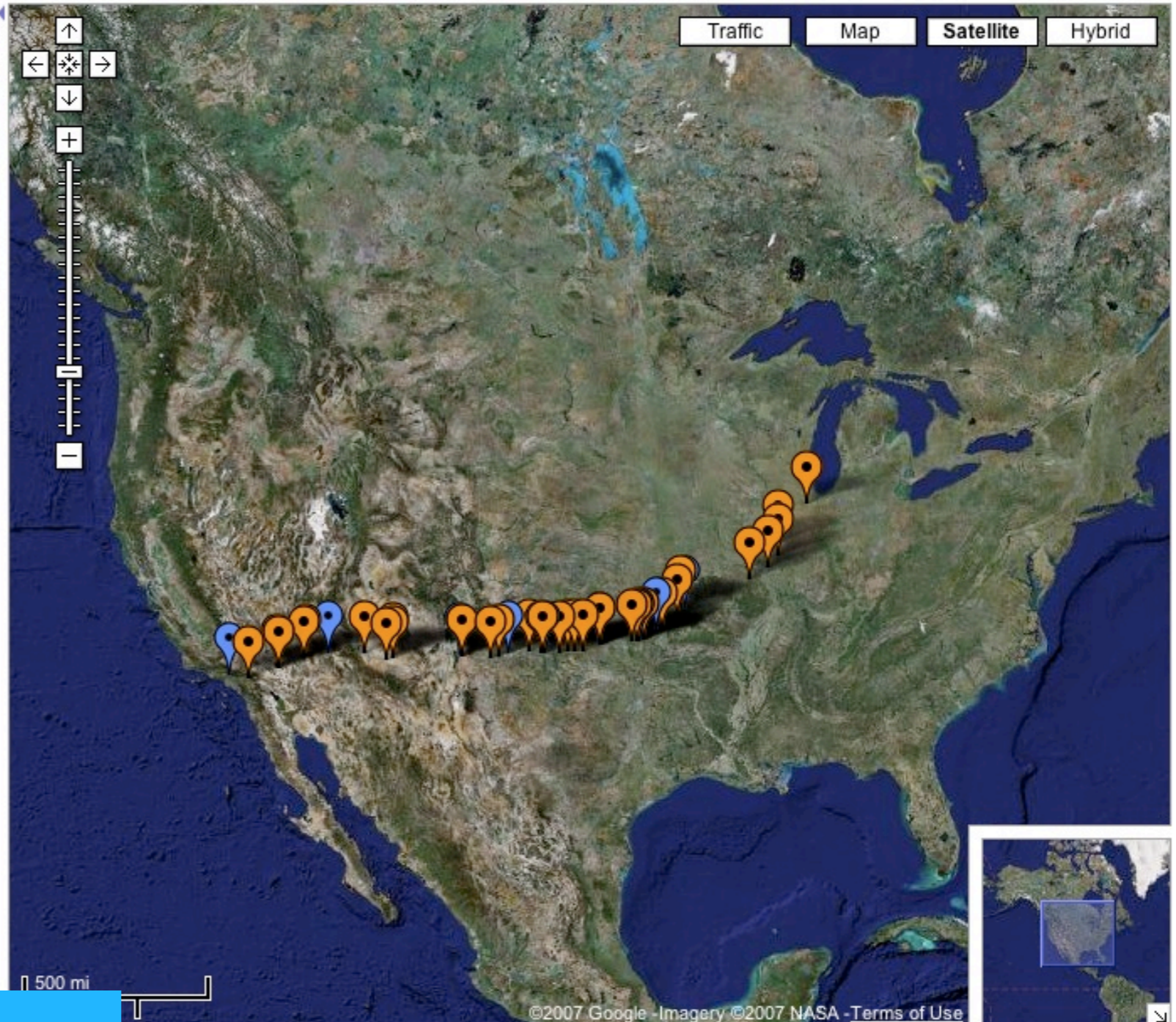
America's Highway: Oral Histories of Route 66

Jay Crim and Shekar Davarya spent the summer of 2002 driving across the country on Route 66, collecting interviews with the people who live, work and travel on the old road. The audio, video and images on this map are the result of that summer, and offer a glimpse into what life was like on the now-decommissioned highway and what remains for those who still travel the road. The America's Highway project was intended to create both a history lesson on America of the past as well as a travel guide for visitors on 66 today. The work was supervised by Professor Bill Leslie, History of Science Department and Mike Reese, Center for Educational Resources, The Johns Hopkins University.

View only - Unlisted

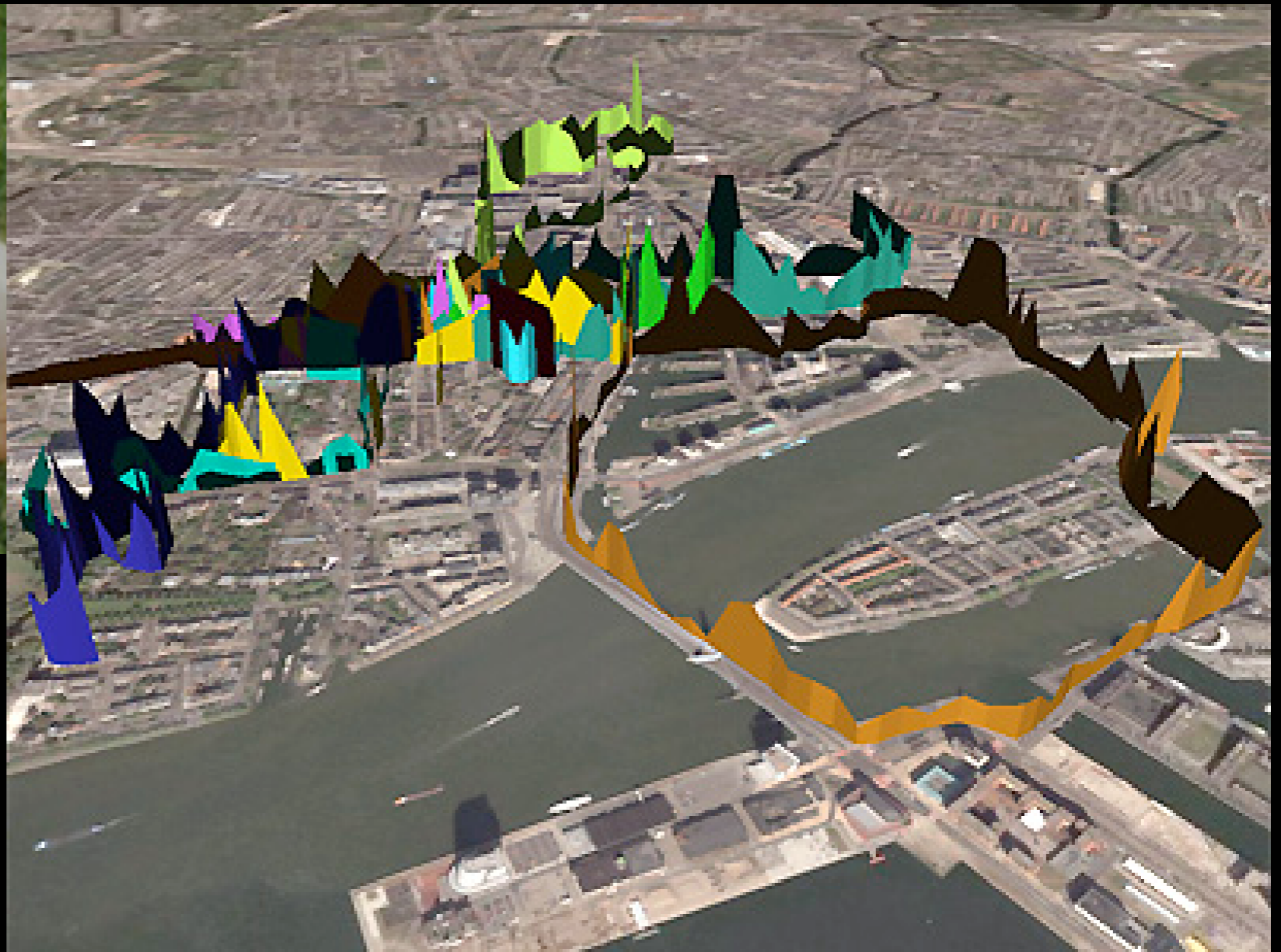
Created by JayCrim on Mar 28 - Updated Apr 3

- [Interview: Angel Delgadillo](#)
Angel called the 1987 meeting that would
- [Interview: David Knudson](#)
David Knudson serves as executive
- [Interview: Michael Wallis](#)
Michael Wallis was born and raised on
- [Interview: Bob Waldmire](#)
If you find yourself behind a yellow VW
- [Interview: Jerry McClanahan](#)
Jerry has worked full-time as a Route 66



Google My Maps

(<http://maps.google.com/help/maps/mymaps/index.html>)



BioMapping

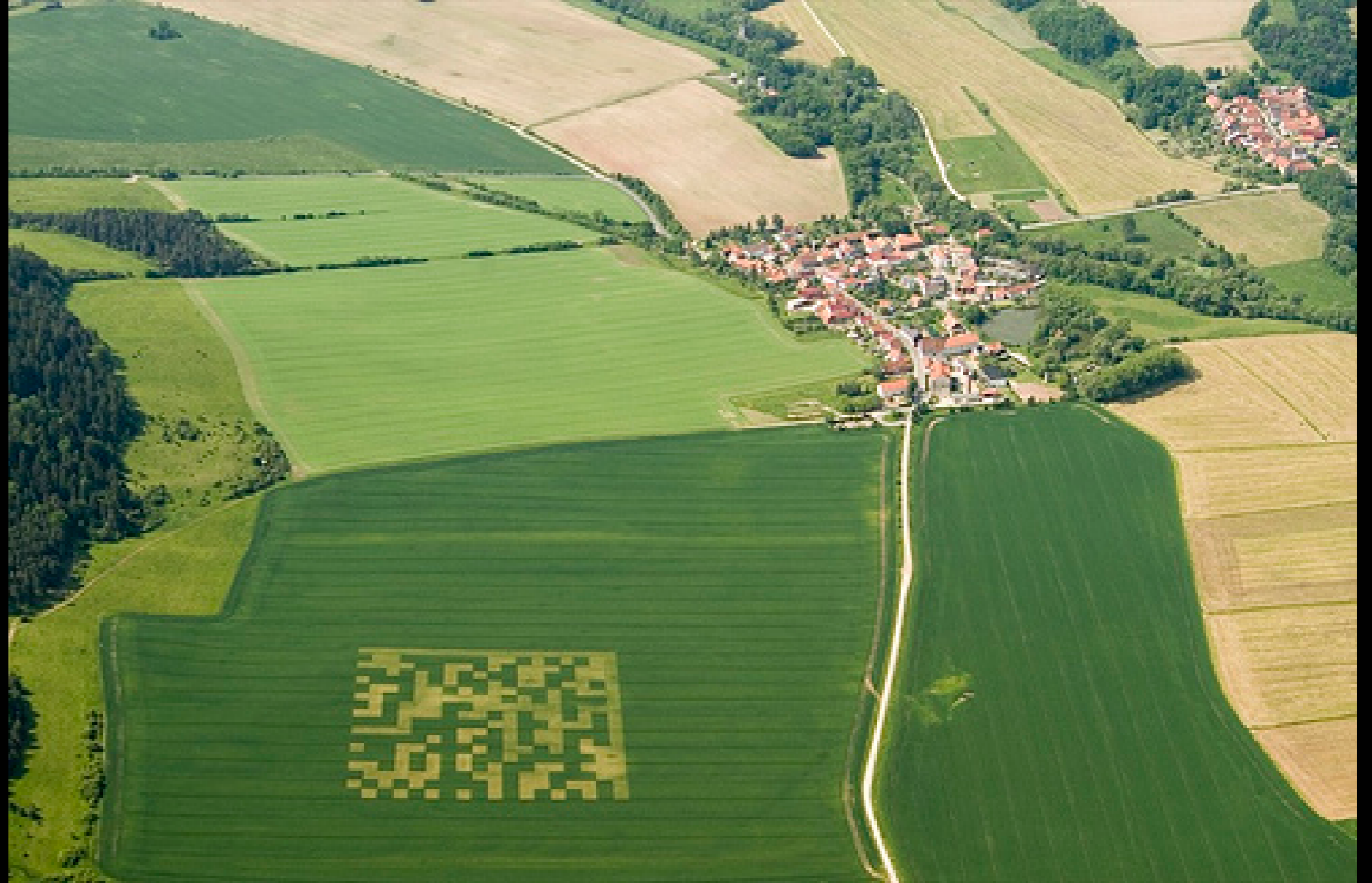
(Christian Nold – <http://biomapping.net/>)

Exploit:

‘Make full use of and derive benefit from (a resource)...use (a situation or person) in a...selfish way’

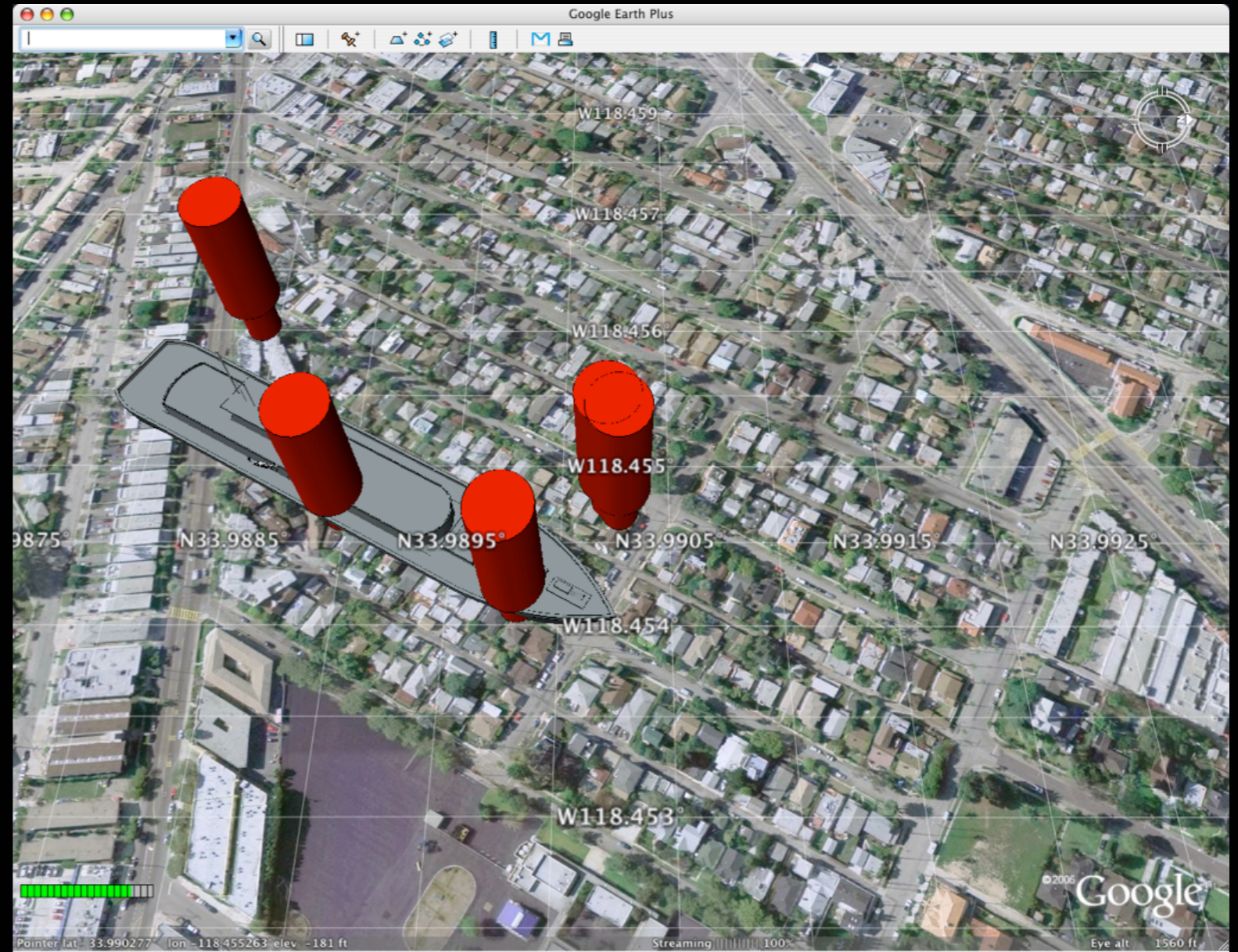


'Google Grafitti'



Hello World

(Bernd Hopfengärtner – <http://hello.w0r1d.net/>)



Battleship: Google Earth

(Julian Blecker – <http://research.techwondo.com/blog/julian/240>)

El Rancho Charter School [07/26/06-12:29 PM]

Select Color Scheme...



- Scott
- Anna
- Rachel
- Nusha
- Louis
- Ashkan
- Amanda
- Bob

PigeonBlog

(Beatriz da Costa – <http://www.pigeonblog.mapyourcity.net/>)

Resonate:

‘The return of a fraction of the output signal from an amplifier, microphone, or other device to the input of the same device.’



Maps

(Aram Bartholl – <http://www.datenform.de/indexeng.html>)



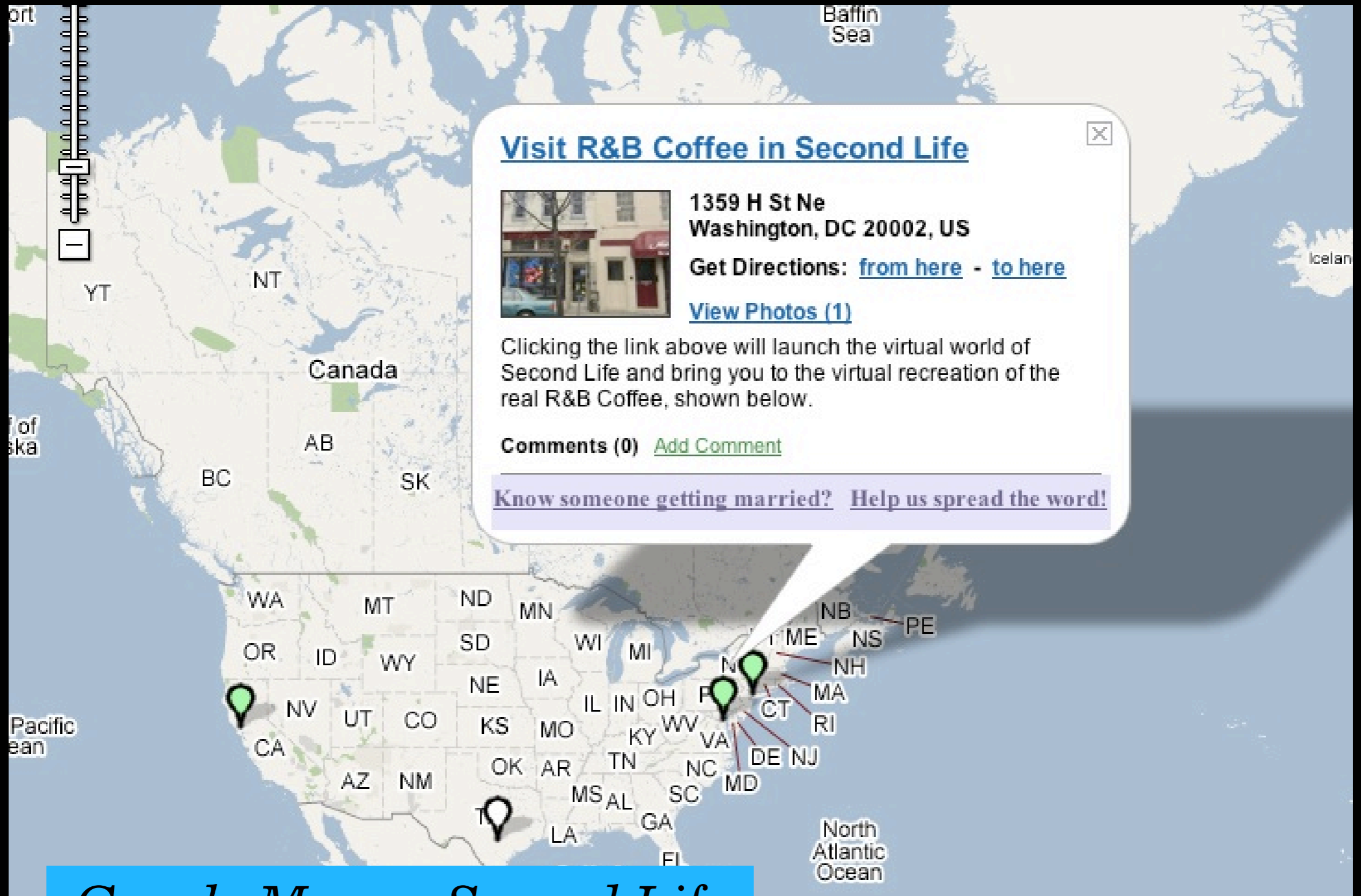
Maps

(Aram Bartholl – <http://www.datenform.de/indexeng.html>)



OGLE

(Eyebeam Research – <http://ogle.eyebeamresearch.org/>)



Google Maps + Second Life

(Communitymaps – <http://www.communitywalk.com/map/4980>)

[http://www.youtube.com/watch?
v=L4CbjSTV78](http://www.youtube.com/watch?v=L4CbjSTV78)

Google Earth in Second Life

January 25th, 2007

Google Earth to get a Second Life?

Posted by Steve O'Hear @ 7:10 am

Categories: Virtual Worlds, Second Life, Google

 **IN FOCUS** » See more posts on: [Second Life](#)



TALKBACK Worthwhile?
ADD YOUR OPINION



+4
4 VOTES

Michael Eisenberg (a partner at VC firm Benchmark Capital) has [posted on his blog](#) about a rumor he's heard regarding a Google plan to build a virtual world based on [Google Earth](#).

Eisenberg writes:

Heard an interesting rumor today from an academic who heard through the PhD grapevine...Google is working on turning Google Earth into a virtual world a la Second Life. That would be an interesting development both for Google. After hearing this, I was struck by the language on the Google Earth website: "One more step to creating a life-like 3-D model of the whole planet.."

It's certainly true that many of the components needed are already in place, with the [latest version](#) of Google Earth having added the ability to build and share rich 3D content using the company's SketchUp 3D modeling software. Having said that, I'd be careful not to pay too much attention to a rumor put out by a partner in the VC firm that owns a substantial stake in Second Life — any news of Google creating its own virtual world is sure to drive up acquisition interest in Second Life from the search giant's competitors.

[Over at VC Ratings](#), Joshua Jaffe asks how Google building its own virtual world fits into its remit of organizing the world's information? However, I've long considered that Google's real mission is **to organize the world around advertising**. If it's true that Google is [about to acquire](#) game advertiser Adscape, a virtual world would seem like a logical next step.

524 diggs [digg it](#)

Google Earth = Second Life?

[http://www.youtube.com/v/
Flsx7ccOCB4](http://www.youtube.com/v/Flsx7ccOCB4)

The future

Cheers!

Sascha Pohflepp

<http://www.pohflepp.com>

<http://blog.pluginimi.com>