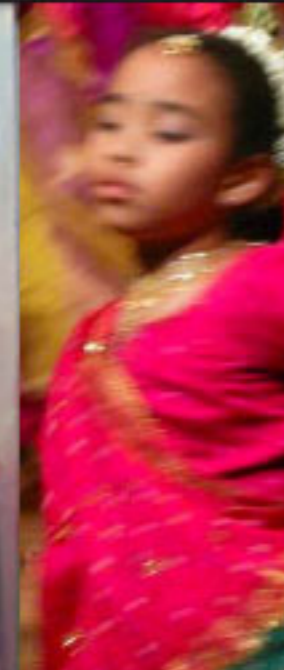


Participating Artists
to be announced



The Kobe Pavilion

A Proposal to Mediamatic Travel and The Amsterdam Biennale

Introduction

The purpose of this proposal is to give voice to our continuing commitment to the biennale culture, its importance to collaborative processes in the arts and to the development of communities of practice.worldwide.

The Kobe Pavilion at the Amsterdam Biennale is designed to reflect the diversity and energy of the artistic production of the city and the region.

Participating Artists
to be announced



Background

In the past, Kobe shared the distinction of being one of the five designated ports for foreign settlement. Politically, the establishment of these settlements brought about the end of the Tokugawa Shogunate, and Japan began a rapid process of industrialization and modernization called Meiji Restoration. Modern Kobe still retains a rich mixture of cultures and traditions. These communities bring to the city more than the energy of their commerce but also the wealth of their social and religious traditions.

Perhaps equally profound was the impact of the 1995 Great Hanshin Awaji Earthquake. It left 6,500 dead and tens of thousands injured and homeless. In addition, the earthquake placed in jeopardy the senses of economic, historic, social and cultural grounding that the city had enjoyed throughout the late twentieth century. In the months and years after the quake, the people of the city and the region developed many institutions dedicated to restoring cultural diversity and building cohesion among many communities. It is widely acknowledged that Kobe's Arts Community played a major role in this renewal. The videos and images that are presented at this pavilion give a view of life inside the studios and institutions that create this community.

Participating Artists
to be announced

good



that

The Kobe Pavilion

A Design Strategy

Kobe was designated one of the worlds Design Cities by UNESCO. As such it has participated, as a host, in the worldwide Creative Cities program. Now, as we look to joining the Amsterdam Biennale, we are seeking to continue in our role as an international partner. We are proposing a plan that expresses our local inventiveness, the city's quiet grace as well as our energy and eagerness to participate with a wider world.



Participating Artists
to be announced



The Kobe Pavilion

Dialogue and movement

The design of the pavilion will present the viewer with a representation of the fluid exchange between the interior and the exterior, the local and the global. We have chosen Mediamatic's Styrofoam structure as offering the best options for our plan.

The work we are assembling for the pavilion will be presented largely through video taped conversations and studio visits. We would like to support the video with drawings and diagrams applied to the interior and exterior surfaces of the pavilion.

The strategy at work in the graphics is to give expression to the dialogue between and movement of artists in and out of the city. The drawings reflect this rich and fluid artistic exchange as an structural element of the artistic practice in Kobe.

Working from the drawings supplied in the Mediamatic pavilions PDF, Theory of Clouds will prepare working drawings of the pavilion to reference the position for each drawing as well as a video monitor. We will supply 3 copies of the DVD presentations. The pavilion itself will be as described in the PDF and in equipment list of this document.

Participating Artists
to be announced



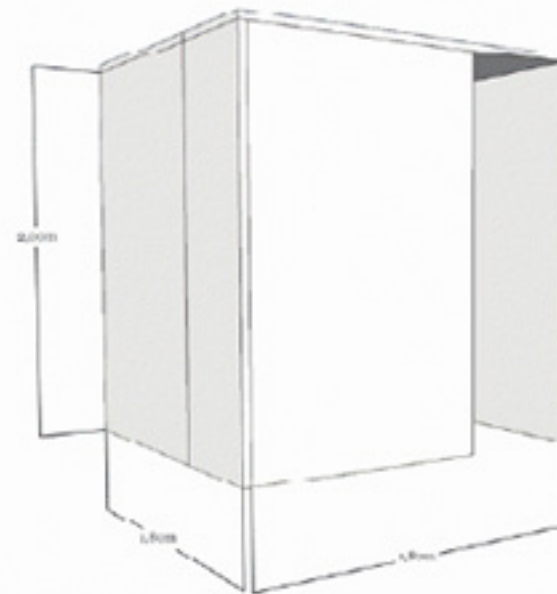
The Kobe Pavilion

Equipment list

From Theory of Clouds:
3 DVDs of the Conversations and
Studio Visits
6 Drawings for Pavilion walls

From Mediamatic:
1 Styrofoam Pavilion
(as seen to the right)
1 Monitor
2 seating

Stryfoam Pavilion



Preferred Configuration

